

A1 INSTALLATION DRAWING

IF THIS DOCUMENT IS PRINTED IN HARDCOPY IT IS FOR INFORMATION USE ONLY AND THEREFORE IS NOT SUBJECT TO UPDATING CONTROLS. ALWAYS REFER TO SOLIDWORKS VIEWER FOR LATEST ISSUE



THIS DRAWING IS CONFIDENTIAL AND IS SUPPLIED ON THE EXPRESS CONDITION THAT IT SHALL NOT BE LOANED OR COPIED OR DISCLOSED TO ANY OTHER PERSON OR USED FOR ANY OTHER PURPOSE WITHOUT THE WRITTEN CONSENT OF AP RACING LTD.

© AP Racing Ltd. 2002
 AP Racing
 Wheeler Road
 Coventry
 CV3 4LB
 Tel: +44 024 7663 9595 e-mail: sales@ap racing.co.uk
 Fax: +44 024 7663 9559 Web site: HTTP://www.ap racing.com

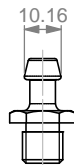
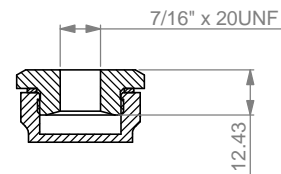
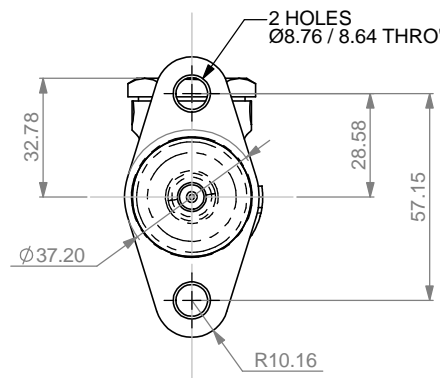
WEIGHT 0.4 Kg (0.88LB)
 FULL STROKE 31.75mm (1.25")
 HYDRAULIC 7/16" x 20 UNF INLET
 3/8" x 24 UNF OUTLET
 BODY MATERIAL ALUMINIUM ALLOY
 TYPICAL APPLICATION FOR USE IN ALL CARS

GENERAL DESCRIPTION: ALUMINIUM ALLOY MASTER CYLINDER SUITABLE FOR MOST BRAKE & CLUTCH APPLICATIONS. THE INLET PORT IS THREADED TO ACCEPT VARIOUS INLET KITS. TWO STYLES OF PUSH ON INLET ADAPTORS ARE AVAILABLE, AS ARE TWO SIZES OF RESERVOIR. SEE DETAILS BELOW.
 CP6093 MASTER CYLINDER IS AVAILABLE IN THE FOLLOWING BORE SIZES: - 5/8", 16.8mm, 0.7", 3/4", 13/16", 7/8", 15/16", 1.0",

ALL PUSHRODS ARE CAPTIVE; GIVING EITHER A 110 OR 155 PUSHROD LENGTH WITH A 5/16" UNF THREAD. NON STANDARD LENGTHS CAN BE ARRANGED UPON REQUEST.

IMPORTANT NOTE: CP6093 MASTER CYLINDERS ARE INDIVIDUALLY SHIMMED DURING ASSEMBLY TO MINIMISE FREE PLAY. THEREFORE PUSHRODS SHOULD NOT BE SWITCHED BETWEEN INDIVIDUAL MASTER CYLINDER ASSEMBLIES.

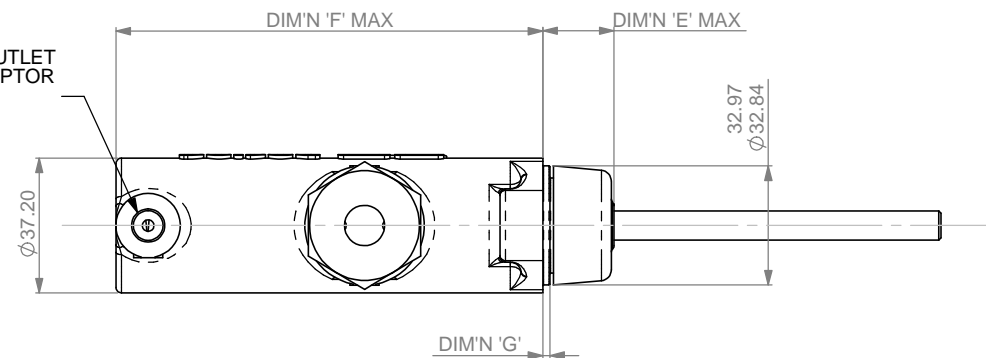
AP RACING TECHNICAL SECTION WILL BE PLEASED TO ADVISE ON THE MOST SUITABLE EQUIPMENT FOR ANY APPLICATION



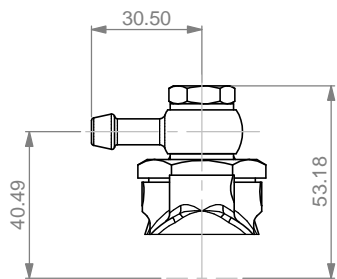
PUSH ON ADAPTOR
 CP2623-30

INLET TYPE 'B'		BORE SIZE
PART NUMBER		
CP6093-90PRT110	CP6093-90PRT155	Ø5/8" (15.8)
CP6093-905PRT110	CP6093-905PRT155	Ø16.8mm
CP6093-91PRT110	CP6093-91PRT155	Ø0.7" (17.8)
CP6093-92PRT110	CP6093-92PRT155	Ø3/4" (19.1)
CP6093-93PRT110	CP6093-93PRT155	Ø13/16" (20.6)
CP6093-94PRT110	CP6093-94PRT155	Ø7/8" (22.2)
CP6093-95PRT110	CP6093-95PRT155	Ø15/16" (23.8)
CP6093-96PRT110	CP6093-96PRT155	Ø1.0" (25.4)

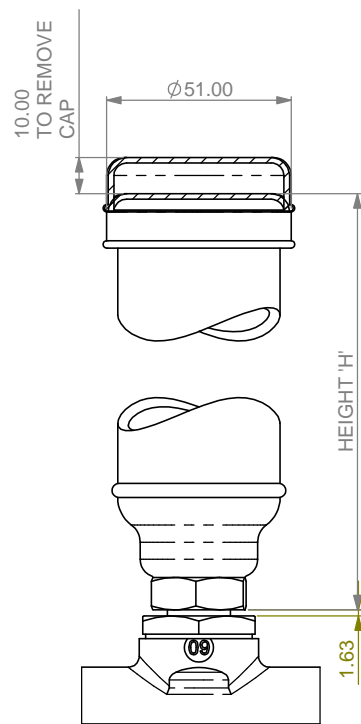
3/8" x 24 UNF OUTLET AEROQUIP ADAPTOR AVAILABLE



BORE SIZE	DIM'N 'A'	DIM'N 'B'	DIM'N 'C'	DIM'N 'D'	DIM'N 'E'	DIM'N 'F'	DIM'N 'G'
5/8"	109.06	49.26	28.5	11.81	20.2	118.33	1.95
16.8mm	109.06	49.26	28.5	11.81	20.2	118.33	1.95
0.7"	109.06	49.26	28.5	11.81	20.2	118.33	1.95
3/4"	109.06	49.26	28.5	11.81	20.2	118.33	1.95
13/16"	109.06	49.26	28.5	11.81	20.2	118.33	1.95
7/8"	109.06	49.26	28.5	11.81	20.2	118.33	1.95
15/16"	107.28	47.48	30.8	10.03	21.55	116.18	4.08
1.0"	107.28	47.48	30.8	10.03	21.55	116.18	4.08



PUSH ON BANJO
 CP2623-41



RESERVOIR KITS
 SEE TABLE

INLET TYPE 'C'		
PART No.	HEIGHT 'H' mm (ins)	VOLUME cm³ (ins³)
CP2709-10	178 (7.0)	160 (63.00)
CP2709-15	128 (5.0)	104 (40.94)

MIN THR'D DIM
 35.0 FOR BORES 5/8" - 7/8"
 37.0 FOR BORES 15/16" - 1.0"

IMPORTANT FITTING OF NUT OR CLEVIS TO FULL EXTENT OF THREAD MAY RESTRICT PISTON TRAVEL.

PUSHROD ANGULARITY NOT TO EXCEED 4°

Issue No.	Alterations			Zone	Initials
	Date & No.	Particulars			
1	04/02/02 B3005	FIRST ISSUE			SAT
2	20/05/02	DRAWING LAYOUT REVISED, KITS SHOWN SEPERATLY TO MAIN CYLINDER, AND LARGER BORE SIZES COMBINED WITH DRAWING FOR SMALLER BORES WITH ADDITION OF TABLE.			SAT
3	05/06/02	PART NUMBERS FOR 125 PUSHROD LENGTH CYLINDERS ADDED. OLD INLET REFERENCES REMOVED.		5F	SAT
4	08/07/02	STD. PUSHROD LENGTH 110 REPLACES STD. LENGTH OF 125		4K	SAT
5	17/10/02 B3471	MIN THR'D DIM'S ADDED IMPORTANT NOTE ADDED		12L	SAT
6	13/11/02 B3521	REFERENCE TO 1-1/8" AND 1-1/16" BORE SIZES DELETED.		#	DRA
7	25/02/03 B3438	NOTES AND CHARTS MODIFIED TO INCLUDE NEW Ø16.8mm BORE SIZE.		#	DRA

SCALE 1:1 SHEET 1 OF 1
 DRAWN Steve Thomas
 APPROVED
 DERIVED FROM CP2293
 TITLE
 1.25" STROKE M/CYL
 INSTALLATION DRAWING
 DRG NO. cp6093-1cd